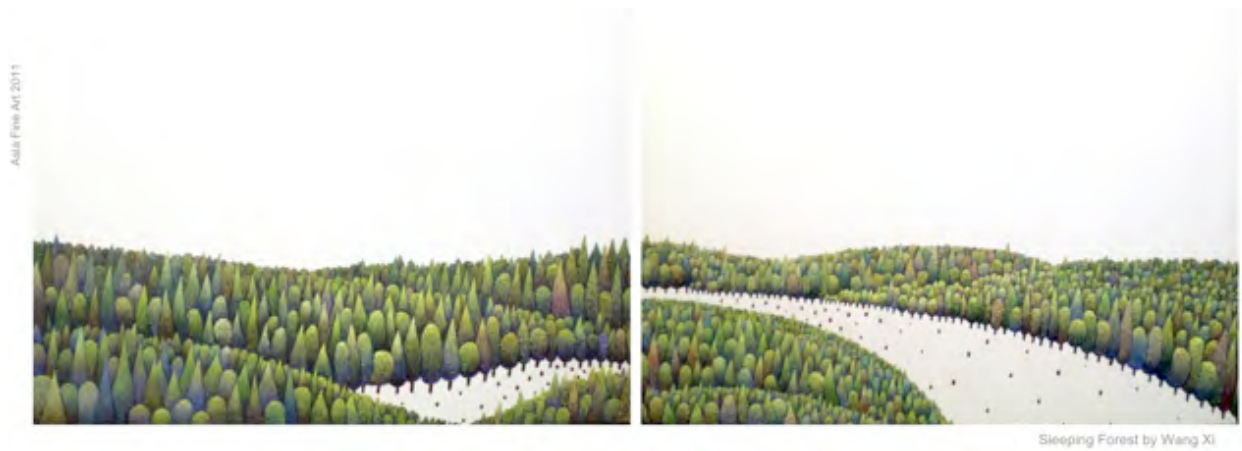


# Asia Fine Art Update 2011 #1

## A New Year Cometh

Out with the old and in with the new – as the saying goes. The skill comes in which old things we keep and how careful we are with the new ones! Much the same in the art world, except that for the first five months of 2011 we will bring five new exhibitions to the gallery. Some of the works have not been seen in Hong Kong before.

The last exhibition **Night & Light** showing the works of **Kyee Myintt Saw** from Yangon, Myanmar was well received and successful. KMS, with his ever popular palette knife painting style, created an excellent, well balanced exhibition, which portray his popular night series paintings, market scenes, abstracts and nudes. As new works arrive from the artist, they will be added to our website.



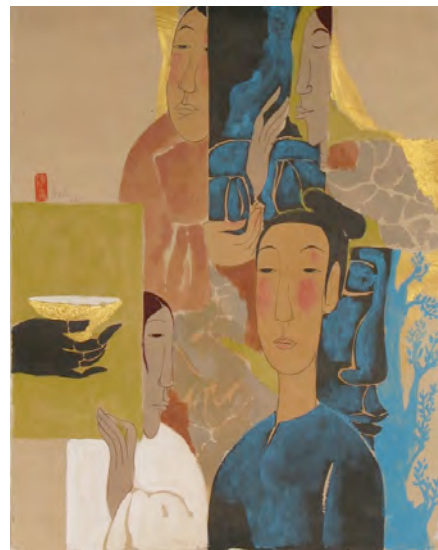
**February** sees the solo exhibition titled **Sleeping Forest** by Chinese artist **Wang Xi** who hails from Chongqing, China. His paintings are generally small, precise and to the point – he is worried about environment and pollution issues. The attitude towards forestry management and the lack of sympathy for sustainable tree harvesting is a shared worry of the new generation of thinking public. This month long event should go some way to show another angle of this basic problem by attractively illustrating paintings in a new contemporary style.

**Wang Xi** painstakingly displays forests of trees which are individually painted with the loving care of a concerned artist. This will be his first solo exhibition and we are delighted that our gallery has been chosen for this special event. **Wang Xi** will be at the gallery for his **Artist Reception Wednesday 9<sup>th</sup> February**, do come and meet this talented young man.

\*\*\*\*\*

**Tuesday 8th March** is **International Women Day**, which will be the date for the women artists reception **Feminine Mystique**. 2011 is the event's 100<sup>th</sup> anniversary and to commemorate this historic year, we will curate a special event with a truly international line up of woman artists from Canada, France, Korea, UK and Vietnam.

The first half of the month **Feminine Mystique** will hang the works of Vietnam woman artists **Ta Thi Thanh Tam & Vu Thu Hien**, both from Hanoi. The second half of the month will feature woman artists **Charito Helgason, Kristy Cho & Elizabeth Hamill**. Charito has Philippine / Vietnamese parents and lives in Canada and Kristy is Korean. The sculptures by **Christine Vidart** will be on show for the whole month.



**March, Feminine Mystique** will see the welcome return of **Ta Thi Thanh Tam** who last had an exhibition with us in 2007 – her new series of lacquer paintings, in bright colours featuring forms from her repertoire of whimsical images, has turned her style almost exclusively feminine for this event. We welcome **Vu Thu Hien** - this will be her first time at the gallery – her works on dzo paper (made from mulberry bark) focus on traditional Asian woman are of the highest quality – which is reflected in her having had solo exhibitions in New York, Italy and Paris. The opening is 2<sup>nd</sup> March which deemed to be a good Fung Shui date in Vietnam. The bronze and ceramic sculptures by **Christine Vidart** will be on show for the whole month.

Asia Fine Art 2011



The second half of the gallery exhibition **Feminine Mystique** shows the latest works of **Charito Helgason** painted in her new studio in Canada - our last showing of Charito's work was some 18 months ago. She is now painting more figurative with contemporary imagining. The paintings of **Kristy Cho**, who is Hong Kong based, are her new works which are taking her more into the realms of fantasy and deep imagination. **Elizabeth Hamill** is featured by a group of her effeminate paintings which border on the psychedelic – bright colours, gracefully distorted figures and bold backgrounds.

\*\*\*\*\*

**Wednesday March 16<sup>th</sup>** is the date for the annual **Hong Kong ArtWalk**. This fund raising event is a great opportunity to meet up with friends in a relaxed art environment, to taste Asian food and drink a variety of wines. Have a great evening out catching up with the ever changing HK art scene. This year, start your evening in Wan Chai, at our secluded Sik On Street gallery before joining the crowds in Hollywood Road.

\*\*\*\*\*

## Dates for your diary – gallery events

**Saturday 29<sup>th</sup> January** – Exhibition opening of **Sleeping Forest** solo exhibition by Wang Xi. The exhibition continues until 28<sup>th</sup> February.

**Wednesday 9<sup>th</sup> February** – Artist Reception 5.00 to 9.00pm for **Sleeping Forest** at Asia Fine Art gallery, Wan Chai. The exhibition continues daily until 28<sup>th</sup> February.

**Wednesday 2<sup>nd</sup> March** – Exhibition opening for **Feminine Mystique** at Asia Fine Art gallery, Wan Chai.

**Tuesday 8<sup>th</sup> March** – Artist reception 5.00 to 9.00pm for **Feminine Mystique part one** at Asia Fine Art gallery, Wan Chai. **International Woman's Day Centenary**

**Tuesday 15<sup>th</sup> March** – Artist reception 5.00 to 9.00pm for **Feminine Mystique part two** at Asia Fine Art gallery, Wan Chai. The exhibition continues until 30<sup>th</sup> March.

**Wednesday 16<sup>th</sup> March** – **Annual Hong Kong Art Walk** The gallery will be open from 5.00 until 11.00pm - this is a fund raising event for the Society for Community Organization (SoCO). For tickets go to <http://www.hongkongartwalk.com/>

The exhibitions for the following three months will be posted in the next AFA Update – in the meantime, THINGS NEW, will be shown on our website [www.asia-fineart.com](http://www.asia-fineart.com)

Sidney Cowell  
Tuesday 25th January 2011

Tel : 852 2522 0405

e : [art@asia-fineart.com](mailto:art@asia-fineart.com)

Web : [www.asia-fineart.com](http://www.asia-fineart.com)



Asia Fine Art is on Facebook

<http://www.facebook.com/asiafineart>